



COTTAGE COLLECTION



OCEAN HOUSE
WATCH HILL, RHODE ISLAND



COTTAGE COLLECTION

Luxury Residence Rentals in Watch Hill

YOUR SUMMER RESIDENCE AWAITS AT OCEAN HOUSE

From a quaint and charming two-bedroom home to dramatic and expansive properties with up to nine en-suite bedrooms, the Cottage Collection offers guests an incomparable New England seaside experience. Each home provides every modern convenience, exceptional service, and an ever-present air of casual, refined elegance. Enjoy luxuriously appointed living spaces and bedrooms, sumptuous baths, and fully appointed kitchens.

In this magical corner of the world, a timeless coastal village awaits.
Watch Hill, Rhode Island. Make yourself at home.

FOR MORE INFORMATION ABOUT OCEAN HOUSE AND THE COTTAGE COLLECTION
PLEASE VISIT WWW.OCEANHOUSERI.COM/COTTAGES OR CALL 844.399.6146



THE COTTAGE COLLECTION

YOUR SUMMER RESIDENCE AWAITS AT OCEAN HOUSE

Ocean House is pleased to present a portfolio of extraordinary Watch Hill homes, all private residences, available to rent on a weekly or monthly basis throughout the summer season. Each property offers its own unique sense of luxury, but all share the distinction of relaxed seaside charm and style. Quintessentially New England in their design, each one provides the perfect setting to create lasting memories for family and friends. Offerings range from an intimate and charming two-bedroom cottage that once served as the village's schoolhouse, to grand and breathtaking homes with up to nine en-suite bedrooms, and a seemingly endless array of spaces to gather, relax, and enjoy. Several cottages include private swimming pools, spas, and fireplaces. One features its own screening room. A dedicated Cottage Concierge is there to assist with all requests, both before and during your visit. The Ocean House Executive Chef and his team are well versed in planning and executing private dinners prepared in your cottage kitchen; the resort's highly respected Wine Director is ready to assist with guiding you through the selection of perfect pairings for your special dinner.

Guests of the Cottage Collection enjoy all of the privacy and exclusivity of a private residence combined with full access to all amenities and services of the world-renowned, Forbes Fifteen-Star Ocean House. They are welcomed at the property's vast and fully attended private beach, which features an array of thoughtfully appointed cabanas. The Five-Star Ocean & Harvest Spa, its saltwater lap pool and full menu of services provide the perfect venue to relax and restore. Guests enjoy exclusive access to the resort's members only Club Room. Or they may wish to end their evening at Ocean House's Forbes Five-Star fine dining room, COAST.

AMENITIES



EACH OF OUR COTTAGES OFFERS THE FOLLOWING AMENITIES:

- * Full kitchens, thoroughly appointed with state-of-the-art appliances
- * Gracious living and dining areas
- * Expansive decks and terraces
- * Luxurious imported linens
- * Cable TV/wireless internet/DVD players/stereo/telephone
- * A dedicated Cottage Concierge team to oversee every detail of your visit
- * Temporary Ocean House membership with full access to resort dining, private beach, spa and fitness facilities, children's programs and golf; recreational amenities including boat charters, nature tours, fishing charters, bike and kayak rentals and sailboat instruction; resort activities including spa classes, food and beverage seminars, and art programs



A WORLD OF EXPERIENCES IS YOURS AT OCEAN HOUSE

THROUGHOUT YOUR COTTAGE STAY, THE FULL AMENITIES
AND ACTIVITIES OF OCEAN HOUSE ARE ALWAYS CLOSE BY

AS A COTTAGE COLLECTION GUEST, YOU'LL ENJOY:

- * Spectacular dining, including access to the Member's only Club Room and signature restaurants such as The Verandah, inventive Mexican fare at Dalia by Danton Valle, fresh Mediterranean dishes on the beach at Théa at Dune Cottage, and fine dining in Forbes Five-Star COAST. Plus casual or elevated dining at Weekapaug Inn, Ocean House's Forbes Five-Star sister property just minutes away
- * Full access to Ocean House's white sand beach, with luxury cabanas available offering beach butler service, complimentary beer, wine, refreshments, and more
- * Daily complimentary resort activities, including art and history tours, film screenings, and cooking and wine classes in the Center for Wine & Culinary Arts
- * Croquet lessons with our world-champion Croquet Pro
- * Yachting and fishing excursions, including Ocean House's Dandy motor yacht, perfect for day-long or sunset cocktail cruises
- * Luxurious spa treatments in the 12,000 square-foot Forbes Five-Star Ocean & Harvest Spa
- * Special events like classic lobster boils on the beach, literary and fine art lectures, family movies on beach, holiday celebrations, and more.



*Book a Private Cabana,
with Beach Butler Service*



*Join Special Events, Such as the
Independence Day Beach Ball*



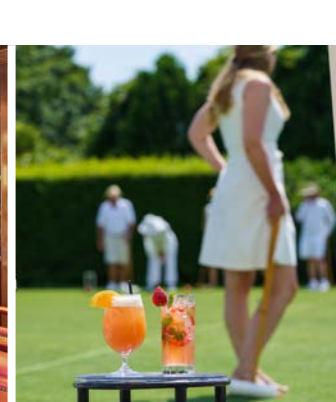
*Tour the Rhode Island and Connecticut Coast on the Dandy
Motor Yacht, or Book a Day-Long Fishing Excursion*



*Enjoy Cooking and Wine Classes in the
Center for Wine & Culinary Arts*



*Dine in the Member's Only Club Room, or
other Signature Ocean House Restaurants*



*Play Croquet with a World-
Champion Croquet Pro*



THE OCEANIC
9 WESTERLY ROAD, WATCH HILL

One of the most iconic cottages in Watch Hill, The Oceanic is known for its towering and prominent position, its beautiful fieldstone construction and stone-walled terrace. Just steps away from Ocean House and the beach, The Oceanic is a memorable and impressive destination for entertainment, meetings, corporate retreats, and large family gatherings. Featuring more than 10,400 square feet of elegant living space, including nine bedrooms and 11 bathrooms, The Oceanic also offers a large meeting (or play) space, a screening room, gym, elevator, and the distinguished tower of The Oceanic is a one-of-a-kind office, with stunning water views. The Oceanic also offers a private pool and spa in addition to two screened porches and decks, one with 360 degree views.

SIZE: 10,400 square feet
BEDROOMS: nine
BATHS: eleven
SLEEPS: seventeen to eighteen







INTERCREST
18 PLIMPTON ROAD, WATCH HILL

Intercrest, built in 1898, stands steps from Ocean House with the bay on one side and ocean on the other. This entirely refurbished home features over 5,000 square feet of elegant living space and 1,500 square feet of exterior decks and porches with breathtaking views of the harbor and beyond. Comfortably accommodating up to 16 guests, the property features seven bedrooms and seven full and two half baths. A gourmet kitchen features a 10-foot island and over 400 square feet of gathering space while a separate top floor entertaining space features a wet bar with kegerator and access to an outdoor deck with direct views to the Ocean House, the Atlantic, and Little Narragansett Bay.

SIZE: 5,100 square feet
BEDROOMS: seven
BATHS: seven and one half
SLEEPS: sixteen to eighteen







INTERMARE
16 PLIMPTON ROAD, WATCH HILL

Built in 1909, Intermare is a newly renovated, bright and airy cottage located just a two-minute walk from Ocean House and Watch Hill village. The first floor features an open concept floor plan with vaulted ceilings and a great room with expansive seating area. With views of the Ocean House, a bright dining area near a beautiful beach stone fireplace, and an open kitchen, it is the perfect space to gather and celebrate. The first floor primary suite features a private deck with outdoor seating and down the hall an inviting den offers a daybed with trundle for extra guest space, perfect for children. The second floor features two bedrooms with a shared bathroom and private deck.

SIZE: 2,781 square feet
BEDROOMS: three
BATHS: two and one half
SLEEPS: six to eight





MINNEBAMA

4 NINIGRET AVENUE, WATCH HILL

Built in 1900, Minnebama—an indigenous word for *by-the-water*—is a shingled cottage located a quick walk from Ocean House and the beach, exhibiting wonderful architectural details including large windows and an expansive wrap around porch. The first floor features a large open eat-in kitchen, a spacious office/game room, a very spacious family room with oversized windows, a small TV room, and formal dining room. The second floor encompasses five bedrooms while the third floor encompasses two bedrooms. The guest house is just steps away from the main house and features three bedrooms, two bathrooms, open concept living room, and kitchen with a sliding door leading to a beautifully landscaped yard.

MAIN HOUSE

SIZE: 5,000 square feet
BEDROOMS: seven
BATHS: five and two half
SLEEPS: twelve

GUEST HOUSE

SIZE: 1,116 square feet
BEDROOMS: three
BATHS: two
SLEEPS: six







UP UP & AWAY

11 TURTLEBACK ROAD, WATCH HILL

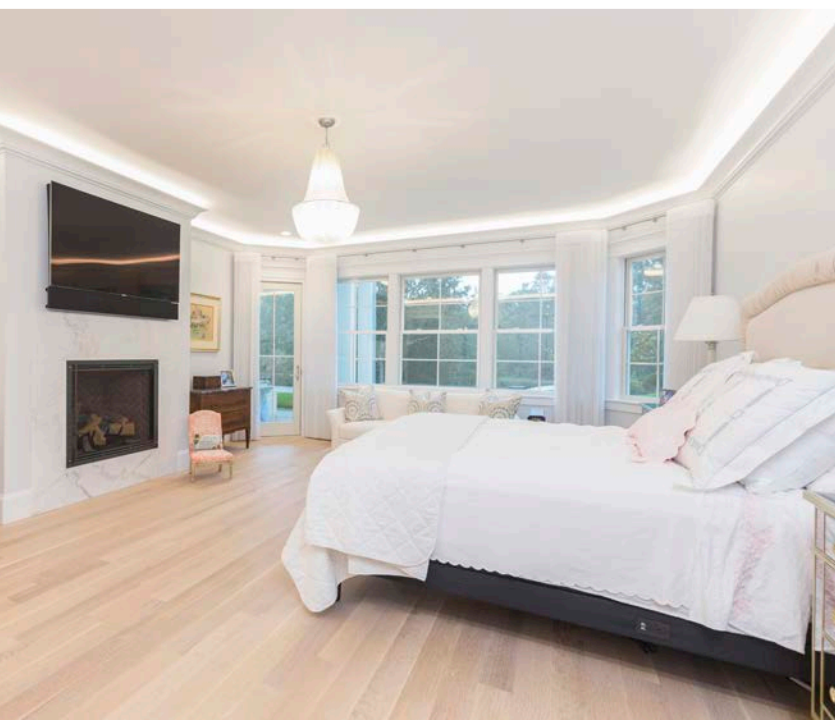
A short drive from Ocean House, Up Up & Away is a multi-level retreat that provides total privacy. This custom-built seven bedroom, eight full and two half bath home also includes a bunk room with four twin beds. This home features luxurious furnishings, an elevator, a chef-inspired kitchen and grand adjoining living area, formal dining room, and spacious bedrooms. Once outside, discover an impressive outdoor living space, with a heated infinity pool and seasonal, outdoor fireplace and grill to be enjoyed on summer nights.

SIZE: 9,700 square feet

BEDROOMS: seven, plus bunk room

BATHS: eight and two half

SLEEPS: sixteen to eighteen





FAIRWAYS

48 OCEANVIEW HIGHWAY, WATCH HILL

Nestled between the ocean and the manicured fairway of The Misquamicut Club, Fairways is a five-bedroom home that is just a short drive from Ocean House. This picturesque property is ideal for families and groups, with over 6,700 square feet of space and room to sleep up to twelve.

A stunning wraparound porch offers views of the ocean and, inside, guests enjoy a sun-filled kitchen, formal living and dining room, seasonal fireplace, and wet bar. Outside, take advantage of the expansive patio with stone fireplace and in-ground pool.

SIZE: 6,760 square feet

BEDROOMS: five

BATHS: five and one half

SLEEPS: twelve







ECHO LODGE
14 AQUIDNECK AVENUE, WATCH HILL

Conveniently located within walking distance of Ocean House and Watch Hill village, this recently renovated three-story cottage includes three primary suites, each with private decks on each floor, as well as three additional bedrooms, all with private baths, making Echo Lodge perfect for multi-generational families and groups. The home offers a roomy, open kitchen with new appliances, luxurious living areas and dining room, an airy sun room with access to two covered terraces and the convenience afforded by a laundry room. A wrap-around porch offers a charming nod to the traditional elements of a New England beach-style cottage.

SIZE: 6,000 square feet
BEDROOMS: six
BATHS: eight and one half
SLEEPS: twelve





SUNSET COVE

29 PASADENA AVENUE, WATCH HILL

A short drive from Ocean House, Sunset Cove is a bright, airy, multi-level home that sleeps up to ten, with meticulously maintained gardens, a heated, saltwater pool, outdoor shower and shallow-water dock. Sunlight floods the chef-inspired kitchen, living, and dining areas that make up the open concept floor plan, with a first floor primary suite with seasonal gas fireplace. The second and third floors feature a comfortable common area and bedrooms, while the third floor boasts an open floor plan with play area and two twin-size beds, a perfect space for children.

SIZE: 4,600 square feet

BEDROOMS: four plus bunk room

BATHS: four and one half

SLEEPS: ten







THE SCHOOL HOUSE
20 WESTERLY ROAD, WATCH HILL

A view of the ocean is offered from this quintessential beach cottage. Affectionately known as “*The Old Schoolhouse*,” this cottage was originally built in 1852 and served a very small enrollment of local children. The cottage has seen several transformations over the years, most recently with a complete renovation. The cottage’s open plan layout features a living room area, complete with fireplace, and a full kitchen. Balcony doors off the living room open wide to an expansive porch overlooking the ocean, and a side yard is perfect for outdoor dining and relaxing while enjoying ocean views. The two-bedroom cottage consists of a primary bedroom offering an incredible ocean vista, a second bedroom with two twin-size beds and two full baths. Ocean House and its private beach are within a short walking distance.

SIZE: 800 square feet
BEDROOMS: two, plus sofa bed
BATHS: two
SLEEPS: five





BLUE SERENITY

10 PAWCATUCK AVENUE, WATCH HILL

Originally built in 1900, Blue Serenity is a quintessential shingle-style Watch Hill cottage.

This elegantly restored and beautifully decorated home features six bedrooms and five bathrooms, offering peace and tranquility overlooking a pool and pool house. It's all quietly tucked just a minute away from the Village and harbor of Watch Hill, steps from shopping, dining, and with easy access to Ocean House.

SIZE: 2,850 square feet

BEDROOMS: six

BATHS: five

SLEEPS: twelve



FOR MORE INFORMATION ABOUT OCEAN HOUSE AND THE COTTAGE COLLECTION
PLEASE VISIT WWW.OCEANHOUSERI.COM/COTTAGES OR CALL 844.399.6146

OCEAN HOUSE
WATCH HILL, RHODE ISLAND

