



OCEAN HOUSE
— COLLECTION —



COTTAGE COLLECTION

2025 – 2026 Season



WELCOME TO WATCH HILL

About Our Cottages...

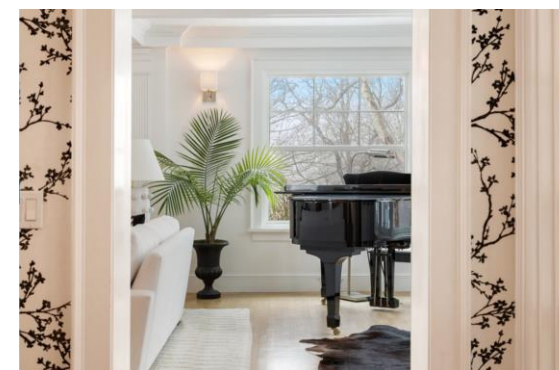
Enjoy the luxury of privacy during your stay in our Cottage Collection.

Each of our cottages offer the following amenities to enhance your experience:

- Full Kitchen, with state-of-the-art appliances
- Gracious Living and Dining Areas
- Luxurious Linens
- Wireless Internet, Cable TV, Stereo, Telephone, DVD Players
- Dedicated Cottage Concierge
- Ocean House Membership
full access to resort dining, private beach, fitness & spa facilities, children's programs, and golf during dates of stay
- Recreational Amenities
- Resort Activities
- Activities & Dining at Weekapaug Inn

Additional features, unique to each location, are listed within the cottage details.

Contact: CottageCollection@OceanHouseRI.com



OCEAN HOUSE
— COLLECTION —

THE SCHOOL HOUSE

20 Westerly Road, Watch Hill, RI 02891



[See Inside The School House](#)

- Size: 800 square feet
- Bedrooms: Two, plus a Sofa Bed
- Baths: Two
- Sleeps: Five
- Master – King Bed
- Bedroom Two – Two Twin Beds
- Walking distance to Ocean House



OCEAN HOUSE
— COLLECTION —

INTERMARE

16 Plimpton Road, Watch Hill, RI 02891



[See Inside Intermare](#)

- Size: 2,781 square feet
- Bedrooms: Three
- Baths: Two, plus a Half-Bath
- Sleeps: Six-Eight
- Master Suite – King Bed
- Bedroom Two – Two Twin Beds or a King
- Bedroom Three – Queen Bed
- Den – One Daybed with Trundle
- Walking distance to Ocean House



OCEAN HOUSE
— COLLECTION —

WINNAPAUG WATCH

1 Rabbit Run, Westerly, RI 02891



[See Inside Winnapaug Watch](#)

- Size: 3,500 square feet
- Bedrooms: Four
- Baths: Four, plus a Half-Bath
- Sleeps: Eight
- Primary Suite – King Bed
- Bedroom Two – Queen Bed
- Bedroom Three – Queen Bed
- Bedroom Four – Queen Bed



OCEAN HOUSE
— COLLECTION —

SUNSET COVE

29 Pasadena Avenue, Watch Hill, RI 02891



[See Inside Sunset Cove](#)

- Size: 4,600 square feet
- Bedrooms: Four, plus a Third-Floor Bunk Room
- Baths: Four, plus a Half-Bath
- Sleeps: 10
- Master Suite – King Bed
- Second Master – King Bed
- Bedroom Three – Queen Bed
- Bedroom Four – Two Twin Beds
- Kids' Bunk Room – Two Beds or a King



OCEAN HOUSE
— COLLECTION —

ECHO LODGE

14 Aquidneck Avenue, Watch Hill, RI 02891



[See Inside Echo Lodge](#)

- Size: 6,000 square feet
- Bedrooms: Six
- Baths: Eight, plus a Half-Bath
- Sleeps: 12
- Master Suite One – King Bed with pullout sofa
- Master Suite Two – King Bed with Pullout Sofa
- Bedroom Three – Two Twin Beds
- Bedroom Four – Queen Bed
- Bedroom Five – Queen Bed
- Junior Suite – Queen Bed with Pullout Sofa



OCEAN HOUSE
— COLLECTION —

HARBOR & HORIZON

1 Neowam Avenue, Watch Hill, RI 02891



[See Inside Harbor & Horizon](#) / [See Inside the Pool House](#)



OCEAN HOUSE
— COLLECTION —

MAIN HOUSE

- Main House Size: 10,400 square feet
- Main House Bedrooms: Five
- Main House Baths: Six, plus Two Half-Baths
- Sleeps: 10
- Master Suite – King Bed
- Bedroom Two – King Bed
- Bedroom Three – King Bed
- Bedroom Four – Queen Bed
- Bedroom Five – Queen Bed

POOL HOUSE

- Pool House Size: 250 square feet
- Pool House Bedrooms: One
- Pool House Baths: One
- Sleeps: Two
- Primary Bedroom – Full Bed

INTERCREST

18 Plimpton Road, Watch Hill, RI 02891



[See Inside Intercrest](#)

- Size: 5,100 square feet
- Bedrooms: Seven, plus a Bunk Room
- Baths: Seven, plus Two Half-Baths
- Sleeps: 16-18
- Master Suite – King Bed
- Bedroom Two – King Bed
- Bedroom Three – King Bed
- Bedroom Four – King Bed
- Bedroom Five – Queen Bed
- Bedroom Six – Queen Bed
- Bedroom Seven – Queen Bed
- Bunk Room – Two Full Size Bunk Beds
- Walking distance to Ocean House



OCEAN HOUSE
— COLLECTION —

UP, UP, AND AWAY

11 Turtleback Road, Watch Hill, RI 02891



[See Inside Up, Up, and Away](#)

- Size: 9,700 square feet
- Bedrooms: Eight
- Baths: Seven
- Sleeps: 18
- First Floor Master Suite – King Bed
- Bedroom Two – King Bed
- Bedroom Three – King Bed
- Bedroom Four – King Bed
- Bedroom Five – King Bed
- Bedroom Six – King Bed
- Bedroom Seven – King Bed
- Bedroom Eight – Bunk Room with Four Twin Beds



OCEAN HOUSE
— COLLECTION —

SEAWOOD ESTATE

23 Shore Road, Westerly, RI 02891



[See Inside Seawood Estate](#)

Please note, the Seawood Estate can be rented as a whole estate or separately, ie. as the Main House (Seawood) and the Guest House (Seawind). Each have a private entrance.

MAIN HOUSE, SEAWOOD

- Main House Size: 12,000 square feet
- Main House Bedrooms: Five
- Main House Baths: Six, plus Two Half-Baths
- Sleeps: 12
- Master Suite – King Bed
- Bedroom Two – King Bed
- Bedroom Three – Queen Bed
- Bedroom Four – Queen Bed
- Bedroom Five – Two Twin Beds
- Lower Floor – Sofa Bed

GUEST HOUSE, SEAWIND

- Guest House Size: 3,600 square feet
- Guest House Bedrooms: Three
- Guest House Baths: Four
- Sleeps: 10
- Master Suite – King Bed
- Bedroom Two – Queen Bed
- Bedroom Three – Queen Bed
- Bedroom Four – Queen Bed
- Extra Room – Four Twin Beds



OCEAN HOUSE
— COLLECTION —

THE OCEANIC

9 Westerly Road, Watch Hill, RI 02891



[See Inside The Oceanic](#)

- Size: 10,400 square feet
- Bedrooms: Nine
- Baths: 11
- Sleeps: 17-18
- Primary Suite – California King
- South Guest Suite – King Bed
- Bedroom Three – King Bed
- Bedroom Four – Queen Bed
- Bedroom Five – Queen Bed
- Bedroom Six – Queen Bed
- Bedroom Seven – Queen Bed
- Bedroom Eight – Twin Daybed with Trundle
- Bedroom Nine – Full Daybed



OCEAN HOUSE
— COLLECTION —

MINNEBAMA

4 Ninigret Avenue, Watch Hill, RI 02891



[See Inside Minnebama](#)

MAIN HOUSE

- Main House Size: 5,000 square feet
- Main House Bedrooms: Seven
- Main House Baths: Five, plus Two Half-Baths
- Sleeps: 12
- Master Suite – King Bed
- Bedroom Two – Two Twin Beds
- Bedroom Three – One Full Bed
- Bedroom Four – Two Twin Beds
- Bedroom Five – One Twin Bed
- Bedroom Six – One Queen Bed
- Bedroom Seven – Two Twin Beds

GUEST HOUSE

- Guest House Size: 1,116 square feet
- Guest House Bedrooms: Three
- Guest House Baths: Two
- Sleeps: Six
- Master Suite – King Bed
- Bedroom Two – Two Twin Beds
- Bedroom Three – Two Twin Beds



OCEAN HOUSE
— COLLECTION —

TIMBERS ESTATE

19A-23 Ocean View Highway, Watch Hill, RI 02891



Please note, the Timbers Estate can be rented as a whole estate or separately, ie. as Timbers Manor House & Tennis Cottage and Timbers Carriage House. Each have a private entrance.

Total Bedrooms: 13

TIMBERS MANOR HOUSE & TENNIS COTTAGE

Manor House Size: 9,800 square feet

- Main House Bedrooms: Five
- Manor House Baths: Five, plus Two Half-Baths
- Sleeps: 10

Tennis Cottage Size: 1,800 square feet

- Tennis Cottage Bedrooms: Four
- Tennis Cottage Baths: Three
- Sleeps: 8

TIMBERS CARRIAGE HOUSE

Carriage House Size: 1,426 square feet

- Carriage House Bedrooms: Four
- Carriage House Baths: Three
- Sleeps: 8
- Bedroom One – Queen Bed
- Bedroom Two – Queen Bed
- Bedroom Three – Two Twins + One Double Futon
- Bedroom Four – Queen Bed



OCEAN HOUSE
— COLLECTION —



Little Narragansett Bay

Block Island Sound

EAST BEACH

OCEAN HOUSE
WATCH HILL, RHODE ISLAND

COTTAGE KEY

- | | |
|--|--|
| 1. THE SCHOOL HOUSE (2 BDRMS)
20 WESTERLY RD., 0.1 MILE | 7. INTERCREST (7 BDRMS+)
18 PLIMPTON RD., 118 FEET |
| 2. INTERMARE (3 BDRMS)
16 PLIMPTON RD., 194 FEET | 8. UP, UP, AND AWAY (8 BDRMS)
11 TURTLEBACK RD., 2.1 MILES |
| 3. WINNIPAUG WATCH (4 BDRMS)
1 RABBIT RUN, 3.5 MILES | 9. SEAWOOD ESTATE (8 BDRMS)
23 SHORE RD., 2.2 MILES |
| 4. SUNSET COVE (4 BDRMS+)
29 PASADENA AVE., 1.2 MILES | 10. THE OCEANIC (9 BDRMS)
9 WESTERLY RD., 0.2 MILE |
| 5. ECHO LODGE (6 BDRMS)
14 AQUIDNECK AVE., 0.4 MILE | 11. MINIBAMA (10 BDRMS)
4 NINIGRET AVE., 0.5 MILE |
| 6. HARBOR & HORIZON (6 BDRMS)
1 NEOWAM AVE., 0.3 MILE | 12. TIMBERS ESTATE (13 BDRMS)
19-23 OCEAN VIEW HWY., 0.9 MILE |



OCEAN HOUSE
— COLLECTION —