



OCEAN HOUSE  
— COLLECTION —



## COTTAGE COLLECTION

2025 – 2026 Season



# WELCOME TO WATCH HILL

---

## *About Our Cottages...*

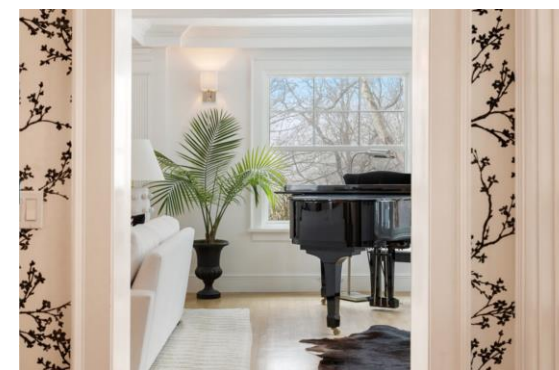
Enjoy the luxury of privacy during your stay in our Cottage Collection.

Each of our cottages offer the following amenities to enhance your experience:

- Full Kitchen, with state-of-the-art appliances
- Gracious Living and Dining Areas
- Luxurious Linens
- Wireless Internet, Cable TV, Stereo, Telephone, DVD Players
- Dedicated Cottage Concierge
- Ocean House Membership  
full access to resort dining, private beach, fitness & spa facilities, children's programs, and golf during dates of stay
- Recreational Amenities
- Resort Activities
- Activities & Dining at Weekapaug Inn

Additional features, unique to each location, are listed within the cottage details.

Contact: [CottageCollection@OceanHouseRI.com](mailto:CottageCollection@OceanHouseRI.com)



OCEAN HOUSE  
— COLLECTION —

## INTERMARE

---

*16 Plimpton Road, Watch Hill, RI 02891*



[See Inside Intermare](#)

- Size: 2,781 square feet
- Bedrooms: Three
- Baths: Two, plus a Half-Bath
- Sleeps: Six-Eight
- Master Suite – King Bed
- Bedroom Two – Two Twin Beds or a King
- Bedroom Three – Queen Bed
- Den – One Daybed with Trundle
- Walking distance to Ocean House



OCEAN HOUSE  
— COLLECTION —



## WINNAPAUG WATCH

---

*1 Rabbit Run, Westerly, RI 02891*



[See Inside Winnapaug Watch](#)

- Size: 3,500 square feet
- Bedrooms: Four
- Baths: Four, plus a Half-Bath
- Sleeps: Eight
- Primary Suite – King Bed
- Bedroom Two – Queen Bed
- Bedroom Three – Queen Bed
- Bedroom Four – Queen Bed



OCEAN HOUSE  
— COLLECTION —

## SUNSET COVE

---

*29 Pasadena Avenue, Watch Hill, RI 02891*



[See Inside Sunset Cove](#)

- Size: 4,600 square feet
- Bedrooms: Four, plus a Third-Floor Bunk Room
- Baths: Four, plus a Half-Bath
- Sleeps: 10
- Master Suite – King Bed
- Second Master – King Bed
- Bedroom Three – Queen Bed
- Bedroom Four – Two Twin Beds
- Kids' Bunk Room – Two Beds or a King



OCEAN HOUSE  
— COLLECTION —

## ECHO LODGE

---

*14 Aquidneck Avenue, Watch Hill, RI 02891*



[See Inside Echo Lodge](#)

- Size: 6,000 square feet
- Bedrooms: Six
- Baths: Eight, plus a Half-Bath
- Sleeps: 12
- Master Suite One – King Bed with pullout sofa
- Master Suite Two – King Bed with Pullout Sofa
- Bedroom Three – Two Twin Beds
- Bedroom Four – Queen Bed
- Bedroom Five – Queen Bed
- Junior Suite – Queen Bed with Pullout Sofa



OCEAN HOUSE  
— COLLECTION —



# HARBOR & HORIZON

---

*1 Neowam Avenue, Watch Hill, RI 02891*



[See Inside Harbor & Horizon](#) / [See Inside the Pool House](#)



OCEAN HOUSE  
— COLLECTION —

## MAIN HOUSE

- Main House Size: 10,400 square feet
- Main House Bedrooms: Five
- Main House Baths: Six, plus Two Half-Baths
- Sleeps: 10
- Master Suite – King Bed
- Bedroom Two – King Bed
- Bedroom Three – King Bed
- Bedroom Four – Queen Bed
- Bedroom Five – Queen Bed

## POOL HOUSE

- Pool House Size: 250 square feet
- Pool House Bedrooms: One
- Pool House Baths: One
- Sleeps: Two
- Primary Bedroom – Full Bed

# INTERCREST

---

*18 Plimpton Road, Watch Hill, RI 02891*



[See Inside Intercrest](#)

- Size: 5,100 square feet
- Bedrooms: Seven, plus a Bunk Room
- Baths: Seven, plus Two Half-Baths
- Sleeps: 16-18
- Master Suite – King Bed
- Bedroom Two – King Bed
- Bedroom Three – King Bed
- Bedroom Four – King Bed
- Bedroom Five – Queen Bed
- Bedroom Six – Queen Bed
- Bedroom Seven – Queen Bed
- Bunk Room – Two Full Size Bunk Beds
- Walking distance to Ocean House



OCEAN HOUSE  
— COLLECTION —



## UP, UP, AND AWAY

---

*11 Turtleback Road, Watch Hill, RI 02891*



[See Inside Up, Up, and Away](#)

- Size: 9,700 square feet
- Bedrooms: Eight
- Baths: Seven
- Sleeps: 18
- First Floor Master Suite – King Bed
- Bedroom Two – King Bed
- Bedroom Three – King Bed
- Bedroom Four – King Bed
- Bedroom Five – King Bed
- Bedroom Six – King Bed
- Bedroom Seven – King Bed
- Bedroom Eight – Bunk Room with Four Twin Beds



OCEAN HOUSE  
— COLLECTION —

## SEAWOOD ESTATE

*23 Shore Road, Westerly, RI 02891*



[See Inside Seawood Estate](#)

Please note, the Seawood Estate can be rented as a whole estate or separately, ie. as the Main House (Seawood) and the Guest House (Seawind). Each have a private entrance.

### MAIN HOUSE, SEAWOOD

- Main House Size: 12,000 square feet
- Main House Bedrooms: Five
- Main House Baths: Six, plus Two Half-Baths
- Sleeps: 12
- Master Suite – King Bed
- Bedroom Two – King Bed
- Bedroom Three – Queen Bed
- Bedroom Four – Queen Bed
- Bedroom Five – Two Twin Beds
- Lower Floor – Sofa Bed

### GUEST HOUSE, SEAWIND

- Guest House Size: 3,600 square feet
- Guest House Bedrooms: Five
- Guest House Baths: Four, plus a Half-Bath
- Sleeps: 10
- Master Suite – King Bed
- Bedroom Two – Queen Bed
- Bedroom Three – Queen Bed
- Bedroom Four – Queen Bed
- Extra Room – Four Twin Beds



OCEAN HOUSE  
— COLLECTION —

# THE OCEANIC

---

*9 Westerly Road, Watch Hill, RI 02891*



[See Inside The Oceanic](#)

- Size: 10,400 square feet
- Bedrooms: Nine
- Baths: 11
- Sleeps: 17-18
- Primary Suite – California King
- South Guest Suite – King Bed
- Bedroom Three – King Bed
- Bedroom Four – Queen Bed
- Bedroom Five – Queen Bed
- Bedroom Six – Queen Bed
- Bedroom Seven – Queen Bed
- Bedroom Eight – Twin Daybed with Trundle
- Bedroom Nine – Full Daybed



OCEAN HOUSE  
— COLLECTION —



# MINNEBAMA

---

*4 Ninigret Avenue, Watch Hill, RI 02891*



[See Inside Minnebama](#)

## MAIN HOUSE

- Main House Size: 5,000 square feet
- Main House Bedrooms: Seven
- Main House Baths: Five, plus Two Half-Baths
- Sleeps: 12
- Master Suite – King Bed
- Bedroom Two – Two Twin Beds
- Bedroom Three – One Full Bed
- Bedroom Four – Two Twin Beds
- Bedroom Five – One Twin Bed
- Bedroom Six – One Queen Bed
- Bedroom Seven – Two Twin Beds

## GUEST HOUSE

- Guest House Size: 1,116 square feet
- Guest House Bedrooms: Three
- Guest House Baths: Two
- Sleeps: Six
- Master Suite – King Bed
- Bedroom Two – Two Twin Beds
- Bedroom Three – Two Twin Beds



OCEAN HOUSE  
— COLLECTION —

# TIMBERS ESTATE

---

*19A-23 Ocean View Highway, Watch Hill, RI 02891*



Please note, the Timbers Estate can be rented as a whole estate or separately, ie. as Timbers Manor House & Tennis Cottage and Timbers Carriage House. Each have a private entrance.

Total Bedrooms: 13

## TIMBERS MANOR HOUSE & TENNIS COTTAGE

Manor House Size: 9,800 square feet

- Main House Bedrooms: Five
- Manor House Baths: Five, plus Two Half-Baths
- Sleeps: 10

Tennis Cottage Size: 1,800 square feet

- Tennis Cottage Bedrooms: Four
- Tennis Cottage Baths: Three
- Sleeps: 8

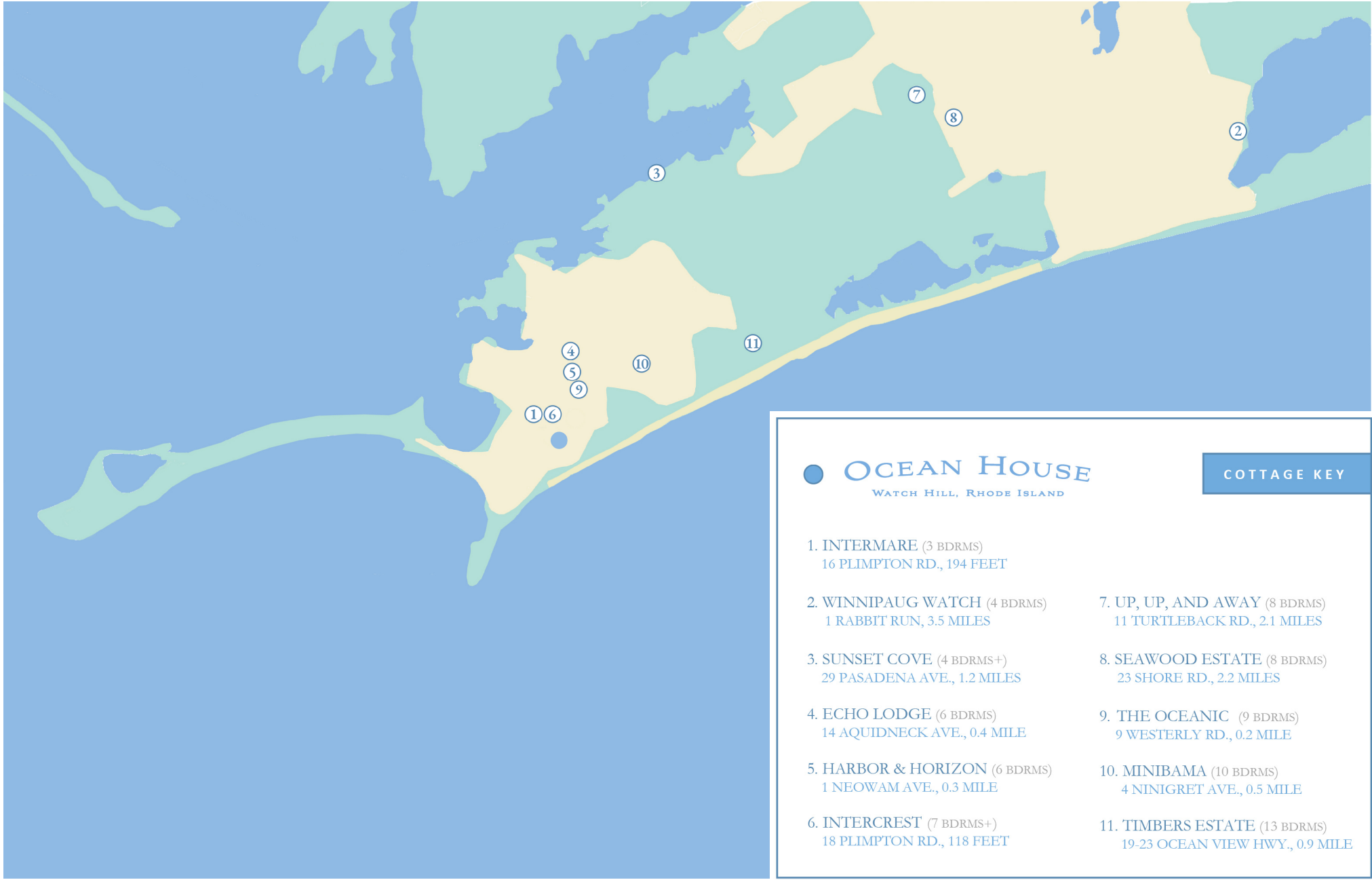
## TIMBERS CARRIAGE HOUSE

Carriage House Size: 1,426 square feet

- Carriage House Bedrooms: Four
- Carriage House Baths: Three
- Sleeps: 8
- Bedroom One – Queen Bed
- Bedroom Two – Queen Bed
- Bedroom Three – Two Twins + One Double Futon
- Bedroom Four – Queen Bed



OCEAN HOUSE  
— COLLECTION —



# OCEAN HOUSE

WATCH HILL, RHODE ISLAND

## COTTAGE KEY

- |  |  |
|--|--|
| 1. INTERMARE (3 BDRMS)<br>16 PLIMPTON RD., 194 FEET      | 7. UP, UP, AND AWAY (8 BDRMS)<br>11 TURTLEBACK RD., 2.1 MILES    |
| 2. WINNIPAUG WATCH (4 BDRMS)<br>1 RABBIT RUN, 3.5 MILES  | 8. SEAWOOD ESTATE (8 BDRMS)<br>23 SHORE RD., 2.2 MILES           |
| 3. SUNSET COVE (4 BDRMS+)<br>29 PASADENA AVE., 1.2 MILES | 9. THE OCEANIC (9 BDRMS)<br>9 WESTERLY RD., 0.2 MILE             |
| 4. ECHO LODGE (6 BDRMS)<br>14 AQUIDNECK AVE., 0.4 MILE   | 10. MINIBAMA (10 BDRMS)<br>4 NINIGRET AVE., 0.5 MILE             |
| 5. HARBOR & HORIZON (6 BDRMS)<br>1 NEOWAM AVE., 0.3 MILE | 11. TIMBERS ESTATE (13 BDRMS)<br>19-23 OCEAN VIEW HWY., 0.9 MILE |
| 6. INTERCREST (7 BDRMS+)<br>18 PLIMPTON RD., 118 FEET    |  |



OCEAN HOUSE  
— COLLECTION —